

Viola Nelson

L'AMI



1944

L'Ami

Volume 10

Published annually by the

ASSOCIATED STUDENT BODY OF PACIFIC COLLEGE

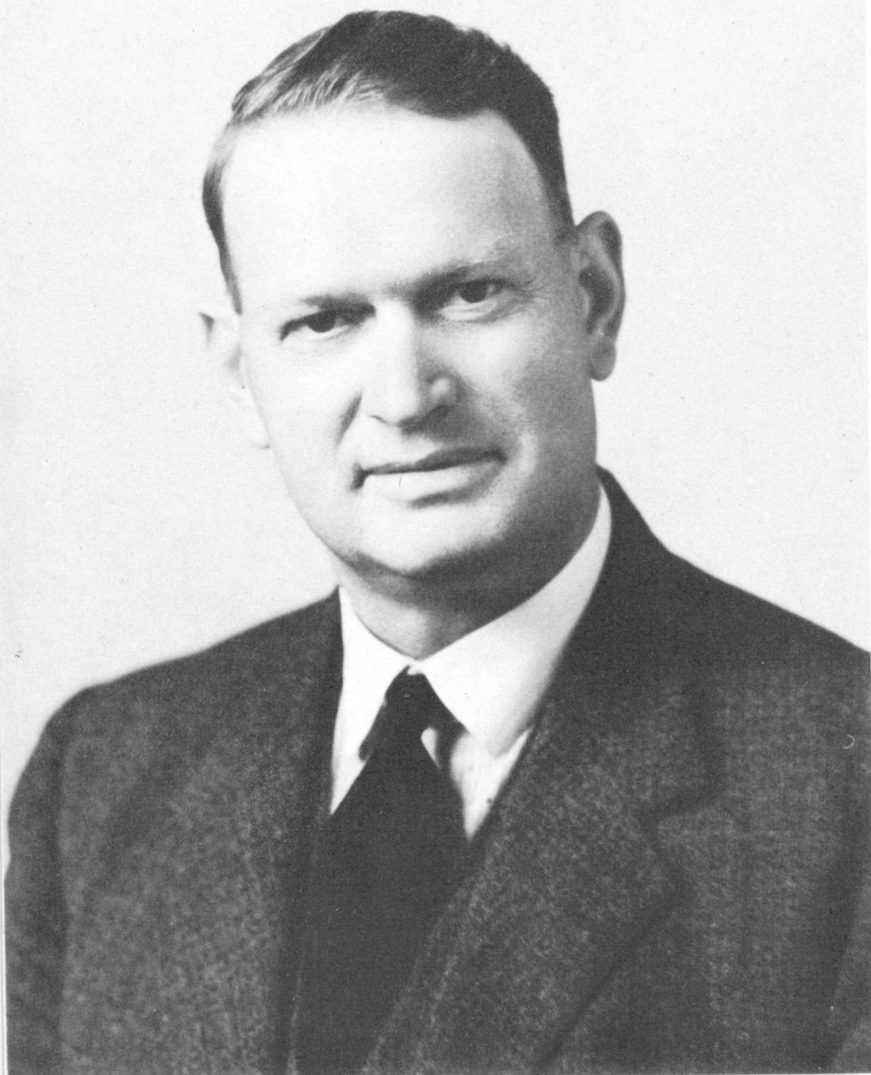
Newberg, Oregon

Co-Editors Geraldine Tharrington
Betty June Ruden

Business Manager Mary Lou Kohler



ADMINISTRATION



President Emmett W. Gulley

The President's Message

Dear Friends:

No generation ever faced a more perplexing situation than your generation. The world is not only upset by actual and terrible warfare, but the causes back of war are as yet unsolved.

Young people of today must dedicate themselves to the solution of these problems. Christian education must play a large part in this solution. Education without Christianity is powerless and Christianity without the tool of education is not at its best. The highest possible Christian education should be your goal.

It has been a great pleasure to work with you this year and I shall look forward to the coming year and the pleasures of working with the new students and old with anticipation.

With every good wish, I am

Sincerely,
EMMET W. GULLEY

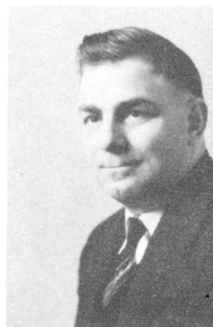
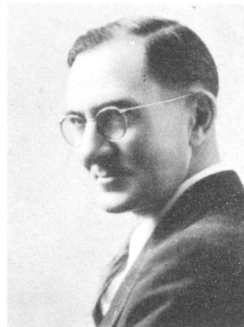
Faculty

Russell W. Lewis, B.S., Ph. B., M.A., *Professor of English.*



Mary C. Sutton, A.B., M.A., *Professor of Biology.*

Oliver Weesner, B.S., R.P.E., *Professor of Mathematics and Physics.*

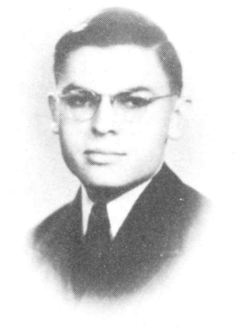


Perry D. Macy, B.S., B.R., M.A., *Professor of History and Political Science.*

Lora Doble, B.A., *Librarian.*

Edward Harmon, A.B., *Assistant Professor of Religious Education.*

Lewis Hoskins, A.B., M.A., *Professor of Speech and Assistant Professor of Sociology and History.*

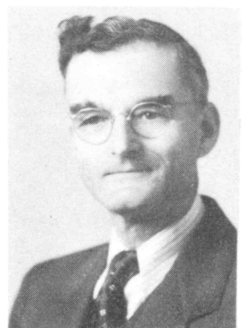


Marie Allen, A.B., *Professor of Home Economics.*

Laurence F. Skene, B.S., M.S., *Professor of Chemistry.*

Gervas A. Carey, A.B., A.M., B.D., D.D., *Professor of Religious Education.*

George Moore, A.B., *Professor of Psychology.*



J. Randolph Hutchins, A.B., *Professor of Sociology and Spanish.*

Allie B. Hinshaw and Bertha Cressman, *Office Staff.*

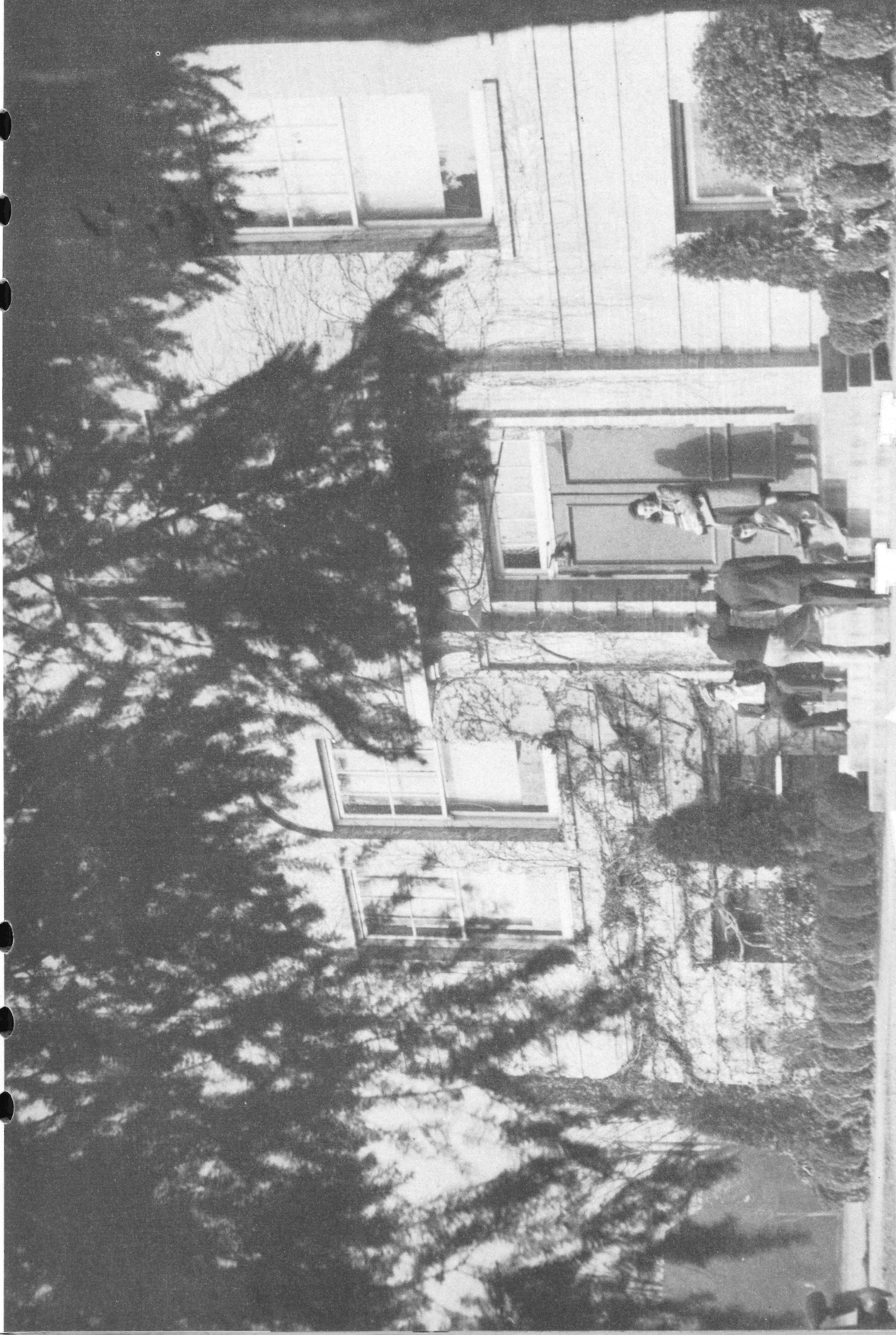
Jessie N. Cole and Alice Roberts, *Matrons of Girls' Dormitory.*





19 - Autographs - 44

FALL





Registration

Registration this year was much lower than usual, many potential students serving in the armed forces, or in C. P. S. camps. Enrollment the first semester was 74, and the second semester 73 enrolled.

Professors Hoskins, Moore and Avery were new additions to the teaching staff. Mr. Avery was forced to resign as Professor of Music, due to a nervous breakdown.

Courses stressing the service of the college and the students to the community were given in collaboration with the new community service policy of the school.



Freshmen Class



One of the outstanding activities of the Freshman class was the successful drive for funds for the W. S. S. F. Other activities centered mainly around the stewardship of Bruin Jr. III, "cabbaging" him from the venerable seniors early in the year. The Rooks also had several parties, and have taken part in all school activities.

Officers of the class were: Paul Thornburg, President; Allen Thomas, Vice-president, and Imogene Degner, secretary.

CLASS MEMBERS

3rd Row, L. to R.: Minthorne, Landreth, Bowers, Johnson, Gulley, Fodge, Repp, Bumbarger, Thornburg.
2nd Row: Thomas, Fowler Marshall, Davis, Jones, Degner, Cole, Craven.
1st Row: Svendsen, Baird, Wiley.

*Betty
Bene.*

Class Members; L. to R., 2nd Row: Ogier, E. Fowler, H. Fowler, Haworth, Brash.
1st Row: Bates, Phipps, Macy, Hadlock, Roberts.

Sophomore Class

The Sophomore class started the ball rolling this year by doing a very thorough job of initiating the Freshmen. The initiation was climaxed by an all-school mixer in the gym. Sophomores also participated in all activities of the school this year.

Leaders of the class were: Loren Mills, President; Don Brash, Vice President, and Mildred Haworth, Secretary-Treasurer.





Junior Class

Principal headache for the Junior class this year was the struggle with points and war shortages involved in giving the Seniors a banquet. Money was raised in part by the sale of stationery. A very successful banquet was given March 24, with "Spring" as the theme.

Class officers were: Wilma Archambeau, President; Viola Nixon, Secretary-Treasurer, and Geraldine Tharrington, Vice President.

Class Members; L. to R.: Thornburg, Tharrington, Archambeau, Garrett, Marx, Nixon, V. Crist, J. Crist, Perisho, Green, Smitherton.

Senior Class

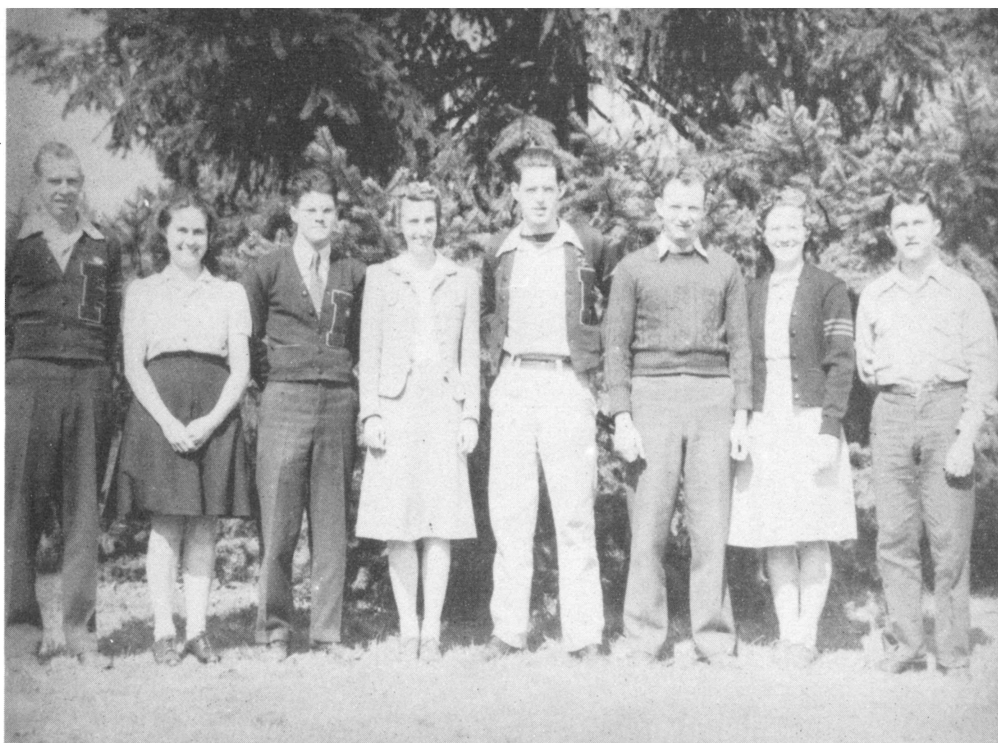
The Senior Class of '44 were initiated into proper Frosh-hood in the fall of '40. New members have entered along the four year trail and some have fallen out, but the '44 lineup consists of eighteen members; a high graduating membership in spite of the fact that many potential Senior men have not been able to stay in school because of service. Two Seniors, Betty Dixon and Douglas Cowley, completed their work in January and are now both in the service, WAVES and Navy, respectively.

Jack Willcuts has been class President this year, assisted by David Thomas, V. Pres., and Doris Manning, Sec'y.

Class Members; L. to R., 2nd Row: Thomas, F. Thomas, Sieloff, Repp, Mardock, Roberts, Hibbs.
1st Row: M. Macy, Ruden, Kohler, Wohlgemuth, Manning, Nordyke, Willcuts.



Council Members: Roberts, Archambeau, Thomas, F. Thomas, Brash, Willcuts, Tharrington, Thornburg.



Associated Student Body

The 1943-44 Student Council, with David Thomas as president, brought the student body successfully through the school year. Geraldine Tharrington was vice-president, and Florence Thomas, secretary. Other Council members were: Chief Treasurer, Arthur Roberts; Treasurer and Senior Class President, Jack Willcuts; Junior Class President, Wilma Archambeau; Acting Sophomore President, Donald Brash, and Freshman Class President, Paul Thornburg.

David Thomas, President



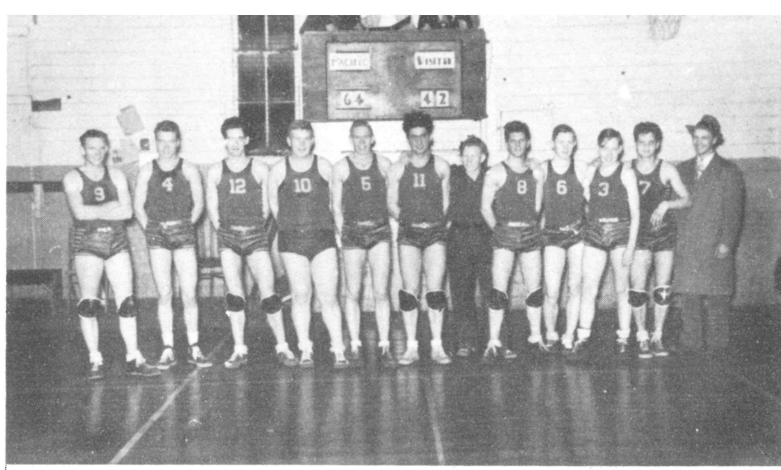
Principal student body activities were concerned with Bruin Jr., III, several novel girl's Bruin Jr. days, all school social functions, the Student Body Play, and May Day.





WINTER





Yell Leaders

Yell leaders Betty Ann Craven, Paul Thornburg and Geraldine Tharrington were elected in try outs held in a Student Body meeting last fall. They very capably led the cheering at basketball games, the only competitive sport entered into by the college.

Yell Leaders; L. to R.: B. Craven, Thornburg, Tharrington





2nd Row, L. to R.: Bowers, Brash, Fodge, E. Craven, Bales
1st Row: A. Thomas, Roberts, Ogier, Willcuts, D. Thomas.

BASKETBALL SCHEDULE OF GAMES

Pacific College	Opponents
32 Pacific University	31
21 Linfield	38
25 .. Valley Skating Rink ..	20
31 Pacific University	47
28 .. Valley Skating Rink ..	26
27 Linfield	43
23 N. N. C.	35
40 Reed	29
38 Reed	21
64 Lewis and Clark	42
20 Dundee	15
30 Dundee	15
Upper Classmen	24
Lower Classmen	21

Basketball

George Bales turned in his first year as Coach of Pacific's basketball team. Although the Quakers had the handicap of a small floor, the Victory Bell rang several times. Several highlights were witnessed throughout the season, chief of which was the winning basket legally made after the final whistle ended the first thriller between Pacific University and Pacific College.

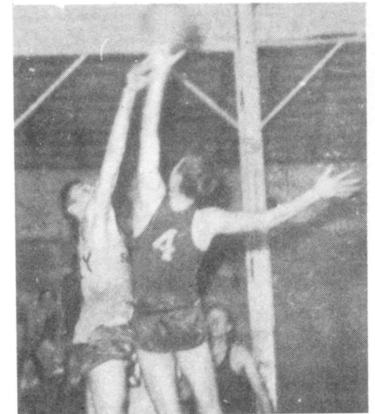
During the first semester a shortage of men was prevalent. This necessitated playing the first string fellows almost full time, with very little substitution. However, new material from the second semester turnout gave Bales one guard, Ross Gulley, and one forward, Chester Bumbarger.

The sharp-shooting, hard-driving Thomas brothers were high point men for the season. David Thomas, elected honorary captain for the season, and also a senior, had 90 points to his credit, while Allen Thomas, freshman, had 84 points to his advantage. Points were well distributed among all the players. Orrin Ogier, Allen Thomas, and Arthur Roberts played in all the halves, while some of the others missed only one or two halves.

Positions were as follows: Orrin Ogier, center; David Thomas, Allen Thomas, Don Brash, and Chester Bumbarger, forwards; Everett Craven, Quincy Fodge, Jack Willcuts, Arthur Roberts, and Ross Gulley, guards. Don Bowers acted as manager.

The prospects for next year are fair, since we have only three basketball men graduating and a large squad of returning lettermen.

Tip-off



Coach Bales



L. to R.: Nordyke, Jones, Tharrington, Macy, Haworth, Roberts, Phipps, Perisho, Wohlgemuth.

Girl's Sports

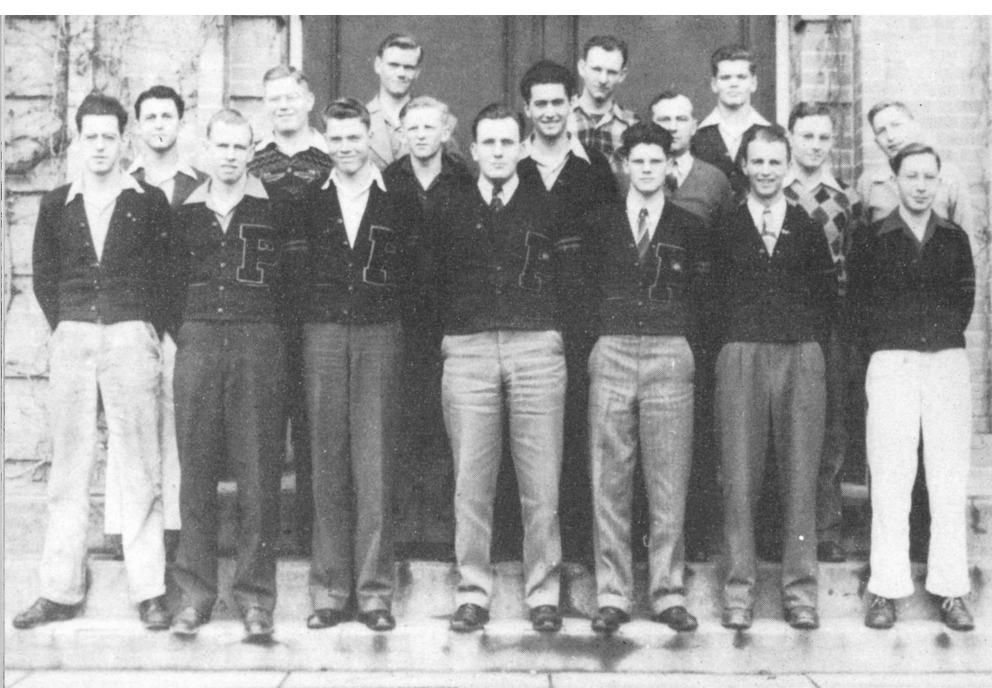
A peppy aggregation of girls turned out for volleyball and basketball under Coach Wohlgemuth. Six volleyball games were played. Doris Manning captained the group. Charlotte Macy was captain of the basketball team which met five opponents.



L. to R., Back Row: Wohlgemuth, Tharrington, Manning, Haworth, Macy, Roberts.
Front Row: Phipps, Craven, Perisho, Nordyke.

Coach: Margery Wohlgemuth





M. A. A.

Regardless of the man power shortage this year, the Men's Athletic Association was active. No football was played, but basketball under Coach Bales was entered into with great zeal. The first game of the season with P. U. was the payoff with P. C. winning the first victory over them for a number of years. The entire season's record was also the best for many years, with only four games lost during the entire season.

Weightlifting, track, and cycling kept the boys active after basketball season.

L. to R., 3rd Row: Landreth, Willcuts, A. Thomas
 2nd Row: Thornburg, Gulley, Bowers, Fodge, Hibbs, Minthorne, Johnson.
 1st Row: Brash, Roberts, Ogier, Macy, D. Thomas, Bales, E. Craven.

L. to R., 3rd Row: Tharrington, Jones, Haworth, Degner, Booth, Manning, Heacock, Ruden.
 2nd Row: Wohlgemuth, E. Fowler, Macy, Ashwill, Phipps, Cole, Kohler.
 1st Row: Baird, Svendsen, Davis, Wiley, Marx, Perisho, Nordyke.

W. A. A.





Left: Edith Phipps.



Presidents:

Right: Jack Willcuts

W. A. A.

The Women's Athletic Association is composed of girls who are actively interested in sports, and its aims are to further athletics, better sportsmanship, and health among the college girls.

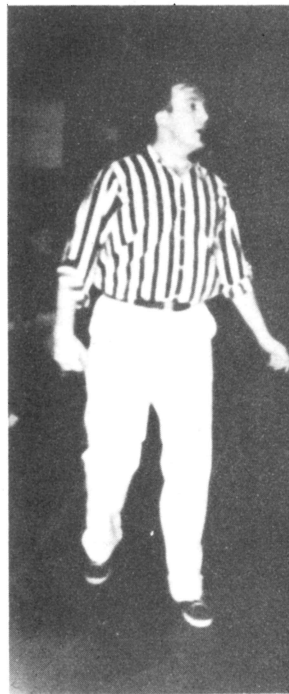
The club started off the year with a dinner and meeting at the home of Edith Phipps. Volleyball and softball were the chief sports engaged in by the girls.

A project of collecting and displaying P. C. service men's and women's pictures was successfully completed by the club.

The W. A. A. was advised by Mrs. Allen, and coached by Margery Wohlgemuth.

Club officers were: Edith Phipps, President; Charlotte Macy, Vice President; Betty Ann Craven, Secretary, and Mildred Haworth, Treasurer.

Referee Macy



Gold P

Gold P carried on its traditional functions this year despite war shortages. The initiation of new members, the Gold P banquet, and the sponsorship of a grade school softball tournament, were some of its principal activities.

The club cooperated in contacting former members and other old students in the interests of the new gymnasium fund.

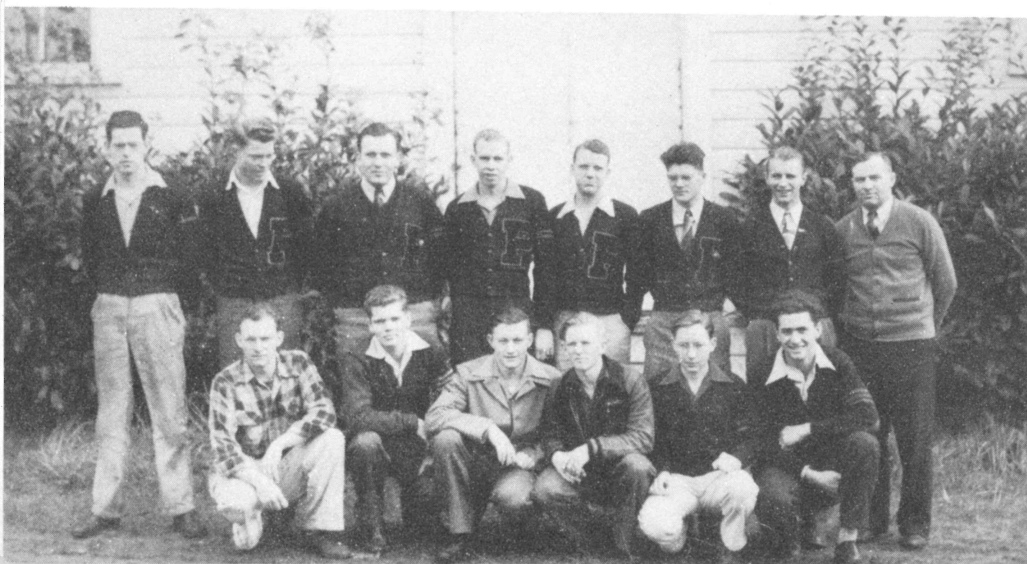
Officers for '43-'44 were; Mahlon Macy, President; Arthur Roberts, Secretary-treasurer.

The annual Gold P basketball tournament was not held this year, but it is planned that in the new gymnasium next year, it will be possible to again carry on this function.



President, Mahlon Macy

Neophytes: Willcuts, A. Thomas, Bumbarger, Bowers, Craven, Fodge.



Gold P Members; L. to R., Back Row: Brash, Ogier, Macy, Roberts, D. Roberts, D. Thomas, Bales, Hibbs. Front Row: Willcuts, A. Thomas, Bumbarger, Bowers, Craven, Fodge.

Gold 2

Gold Q this year successfully initiated neophytes, and gave its annual formal Valentine dinner at the Friend's Church, February 12. In addition to these, the girl's letterman club solicited funds from former members for the new gymnasium.

Officers during 1943 were: Doris Manning, President, Joyce Perisho, Vice President; Kathleen Repp, Secretary; Margery Wohlgemuth, Treasurer. Elections held in January installed Joyce Perisho as President; Geraldine Tharrington, Vice President; Betty Ann Craven, Secretary, and Mildred Haworth, Treasurer.



President: Doris Manning

Neophytes: Craven, Tharrington, Macy



Gold Q Members; L. to R.,
Back Row: Tharrington,
Haworth, Macy, Manning,
Booth, Wohlgemuth.
Front Row: Ashwill, Marx,
Kohler, Craven, Perisho,
Phipps, Nordyke.

Y. M. C. A.

The Y. M. has this year had the privilege to hear a number of outside speakers as well as faculty members talk on pertinent subjects related to spiritual life.

Besides presenting handbooks to all new students this fall, a welcoming formal reception was given each semester with the Y. W. C. A.



Members; L. to R., 3rd Row: Thornburg, Brash, Roberts, Ogier, Fodge, Johnson, H. Thornburg.
2nd Row: Minthorne, Landreth, Smith, Bales, Willcuts, D. Thomas.
1st Row: Craven, A. Thomas, Bowers, Gulley, Hibbs

Members; L. to R., 3rd Row: E. Fowler, Sieloff, Wiley, Booth, Green, Wohlgemuth, Fowler,
Haworth, Hadlock, Degner, Ruden.
2nd Row: Bates, Svendson, Mardock, Roberts, Perisho, Cowley, Jones, Garrett, Nixon.
1st Row: Baird, Heacock, Marx, Nordyke, Cole, Thomas, Macy, Tharrington



Y. W. C. A.

The Y. W. this year has included all the girls on the campus. The weekly programs have consisted of speakers, student discussions, and joint meetings with the Y. M. Such projects as deputation teams, building a prayer room in Wood-Mar Hall, and maintaining a student prayer meeting each week, have been carried on in conjunction with the Y. M. C. A.

Officers of the organization were: Florence Thomas, President; Charlotte Macy, Vice President; Eleanor Fowler, Secretary, and Margery Cole, Treasurer. Mrs. Lloyd Cressman was advisor to the group.



Y. W. and Y. M. Presidents:

Left, Florence Thomas

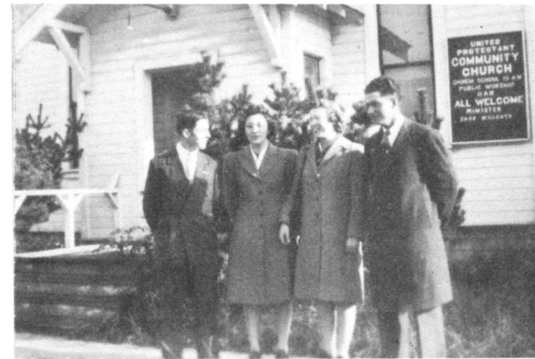
Right, Jack Willcuts

Deputation

A large group from the student body of Pacific College took part in deputation work this year. Special emphasis was placed on this service by both the Y. M. and Y. W. cabinets. Over 600 miles were traveled, and 40 students in both groups were sent out to various local churches and other Friend's Meetings in Oregon yearly Meeting.

Quartet:

Thornburg, Macy, Haworth, Fodge



L. to R., 3rd Row: D. Thomas, Ogier, Fodge, Roberts, Thornberg, Nordyke.
2nd Row: Tharrington, P. Thornburg, Bales, Willcuts, Haworth, F. Thomas.
1st Row: Jones, Green, Mardock, Roberts, Perisho, Macy, Cole.



Chorus

One of the major activities of Pacific College is the Chorus, to which the majority of the students belong. Upon the resignation of Mr. Avery, the chorus was directed by Herschel Thornburg. A program presented at the Friends Church, and a concert presented at the close of the school year were the projects of the group.

Trefian

Trefian Literary Society spent a busy year, with meetings designed to further the cultural interests of the girls in the college. Several new members were added in the first semester when Wilma Archambeau was president. The project for the year was the addition of a lemon fork and a pair of sugar tongs to the tea service of the club.

This year the members have had a chance to contribute to the meetings. Business meetings were followed by programs such as book reviews, or musical programs.

Members; L. to R., Back Row: Haworth, Tharrington, Craven, Thomas, Jones, Garrett, Miss Sutton, Nixon, Baird.
Front Row: Archambeau, Hadlock, Marx, Degner, Fowler, Macy.



L'Ami

The L'Ami this year felt the effects of the war situation to a greater degree than was originally expected. Shortages of film, paper, cover materials and lack of students all faced the staff, which nevertheless made the best use of materials available.

The L'Ami, published annually, is a student body publication. Geraldine Tharrington and Betty June Ruden were editors for the 1944 edition. Betty Ashwill served as art editor, Mildred Haworth as organization editor, while Terrell Repp and Lewis Hoskins were L'Ami photographers. Mary Lou Kohler, business manager; Mary Frances Nordyke, advertising, and Mahlon Macy, circulation, completed the staff.



L'Ami Editors: Ruden and Tharrington

L'Ami Staff; L. to R., Back Row: Gulley, Repp, Thornburg, Macy, Mr. Hoskins.
Front Row: Haworth, Vasey, Nordyke, Ruden, Tharrington, Archangeau, Kohler.





Crescent Staff; L. to R., Back Row: Ogier, Mr. Lewis, Johnson, Roberts, Degner, Willcuts.
Front Row: Haworth, Ruden, Manning

Crescent

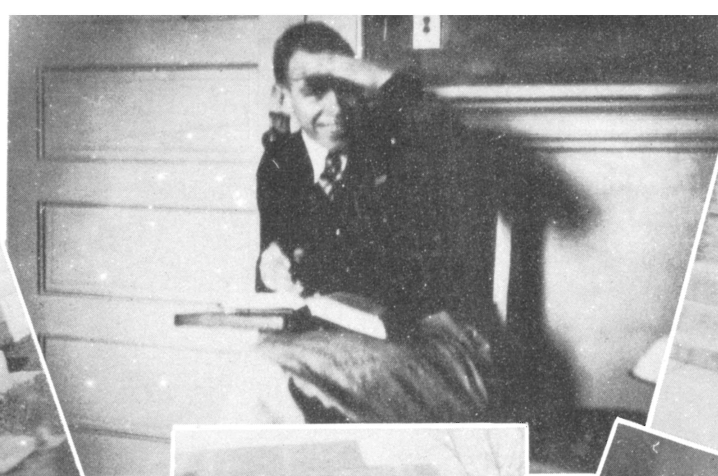
The Crescent, a student body bi-monthly publication, was published this year under Doris Manning, editor, and a staff of eight. Mildred Haworth, next year's editor, served an apprenticeship as associate editor. The remainder of the staff consisted of Orrin Ogier, Advertising Manager; Kathleen Repp, Business Manager; Betty June Ruden, News Editor; Jack Willcuts, Feature Editor; Betty Ann Roberts, Circulation Manager. Various other students reported during the year. Mr. Lewis is advisor.

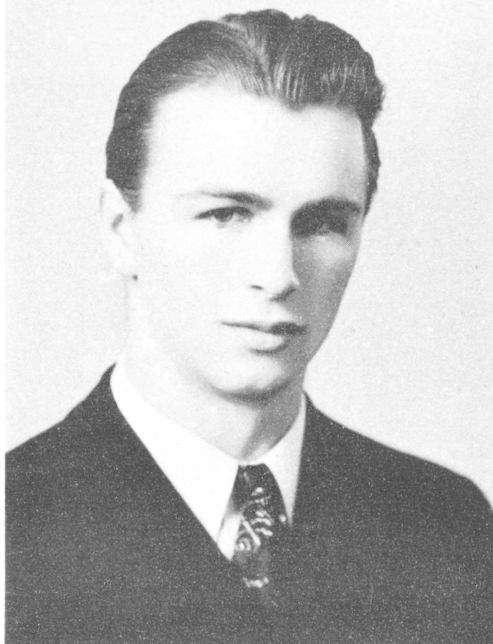
Editor: Doris Manning



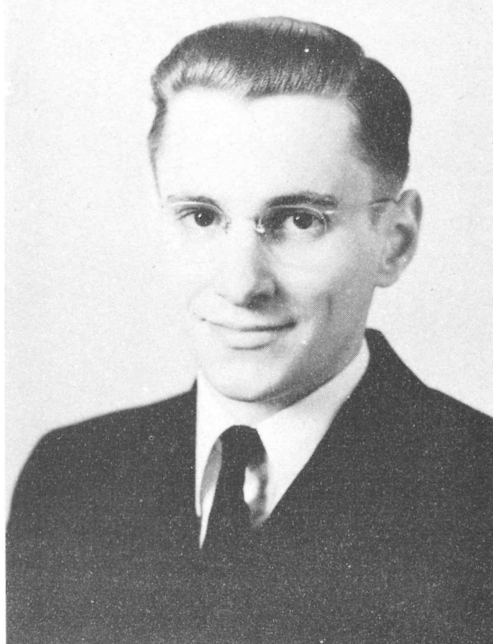
A black and white photograph of a multi-story building with a prominent cornice and decorative brackets. The building is partially obscured by the branches of a tree with small, light-colored blossoms. The sky is a uniform light gray. The word "SPRING" is printed in large, white, serif capital letters across the bottom of the image. On the left edge, there are four black binder rings.

SPRING





Bales, George A., B. A., Th. B.
 Newberg, Oregon
 Major: English and Religion
 Activities: Pres. Pep Club, '40-'41; Pep Band, Chorus, and Orchestra, '40-'42; Originator and Sponsor of Student programs, '42-'43; Listed in Who's Who, '41; V. Pres., Sr. Class, '42-'43; Homecoming Chr., '43; Adv. Mgr. S. B., '41-'43; Member of Tennis Team and Football Letterman; Graduate Work; '43-'44; Program Chr. Y. M., '43-'44; Deputation Work; Member of Gold P. Club; Men's Athletic Coach, '43-'44.



Smith, George E., B. A., Th. B.
 Salem, Oregon
 Major: Religion
 Activities: Pacific Bible College '38-'41; Member of May Day Court, '42; B. A. Degree, '43; Deputation Work; Graduate Work, '44.

The Bachelor of Theology Degree

Candidates for the Th. B. degree must complete thirty semester hours beyond requirements for A. B. or B. S. degrees. A major in Religious education is also requisite. In case such a major was completed for the A. B. degree, not more than fifteen of the additional thirty hours shall be in the field of Bible and Religious education.

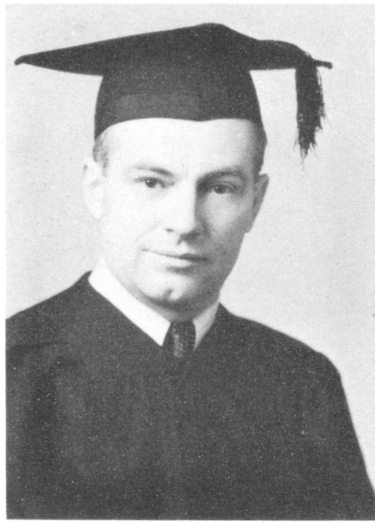
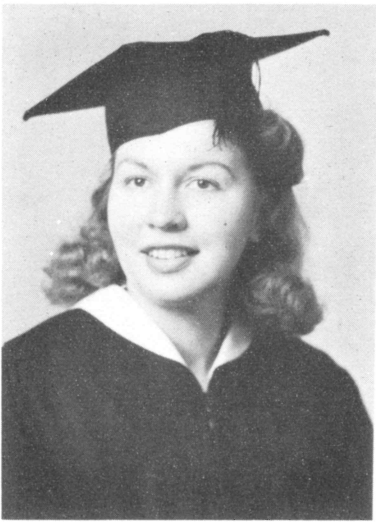
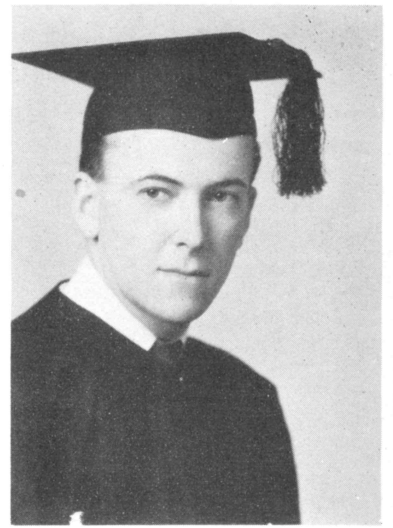
One hour per semester may be earned by completing a project in the field of Religious Education and presenting a written report thereof. Such a project may consist of service as assistant pastor, or administrative work in connection with Bible School, Junior Church, or similar activity.

The Th. B. degree was awarded this year, for the first time in the history of the college. Recipients of the degree were George Smith and George Bales.



Edwards





The Senior Class of 1944

Ashwill, Betty Vasey, B. A.

Newberg, Oregon

Major: English

Activities: Volleyball Team, '40-'42; Pub. Chr. Y. W., '41-'42; S. B. Play, '40; Treas-Trefian, '41; V. Pres. Trefian, '42; Pres. Trefian, '43; V. Pres. W. A. A., '42; Pres. W. A. A., '43; Chorus, '40-'42; V. Pres. Gold Q., '43; Editor L'Ami, '42; Sr. Class Soc. Chr., '43; Listed in Who's Who, '42; May Queen, '44.

Looth, Alice Gulley, B. A.

Newberg, Oregon

Major: English

Activities: Soc. Chr. Y. W., '39-'40 Treas. Pep Club, '39-'40; Deputation Team, '39-'40; V. Pres. Y. W., '40-'41; Class Sec'y., '40-'41; Sec'y. F. O. R., '40-'41; Volleyball Team, '40, '41, '44; Soc. Chr. S. B., '40-'41; Volleyball Chr., '40-'41; Soc. Serv. Chr. Y. W., '41-'42; Student-Faculty Comm. on Coop., '41-'42; Crescent Staff, '41-'42; Chorus, '41-'42; Biology Lab. Assist., '41-'42; Member Y. W., '43-'44; Member Gold Q., '43-'44.

Cowley, Douglas, B. A.

Newberg, Oregon

Major: History and Political Science

Activities: Member I. R. C., '39-'40; Crescent Editor, '39-'40; Photographer L'Ami, '39-'40; Class Play, '39; Tennis Team, '39-'40; L'Ami Editor, '43; Listed in Who's Who, '43.

Dixon, Betty, B. A.

Newberg, Oregon

Major: Music

Activities: Fresh Class Play, '40; Member Y. W., '40; S. B. Play, '43; Chorus, '40-'44; Pep Band, '42; Basketball, '42; Volleyball, '42.

Hibbs, Eugene B., B. A.

Newberg, Oregon

Major: History

Activities: Pacific College, '23-'24; Cascade College, '25; Pacific College, '43-'44. Gold P.

Kohler, Mary Lou Hoskins, B.A.

Portland, Oregon

Major: English

Activities: Fresh. Class Play, '39; Class Sec'y., '39-'40; Member Y. W., '39-'40; Member Gold Q., '40-'44; Crescent Staff; Volleyball, '39; Basketball, '40-'41; Tennis, '40-'41; Univ. Ore. Exten., '42-'43; Bus. Mgr. L'Ami, '44.

Macy, Mahlon, B. A.

Caldwell, Idaho

Major: Religion

Activities: Cascade College, '40-'41; Football letterman, '41-'42; Pres. Gold P., '43-'44; Member Y. M. and Deputation Workêr; Pastor of Middleton Friends' Church, '42-'44.

Manning, Dor's, B. A.

Roseburg, Oregon

Major: English

Activities: Member Y. W., '39, '41-'44; Member Gold Q., '41-'44; Pres. Gold Q., '43; Crescent Editor, '44; Class Sec'y., '44; Volleyball Team, '39, '41-'44; Capt. Volleyball Team, '44.

Mardock, Bernice, B. A.

Newberg, Oregon

Major: English

Activities: Friends' Bible College, '35; Cascade College, '39-'40; Member Y. W., '41-'44; Chorus '40-'44; Trio '41-'43; Deputation Chr. Y. W., '44; S. B. Play, '42; Dramatics Club, '44.

Nordyke, Mary Frances, B. S.
Newberg, Oregon
Major: Biology
Activities: Sec'y. W. A. A., '41-'42; Member Y. W., '40-'44; Music Chr. Y. W., '43; Member Gold Q., '41-'44; Member Trefian, '40-'44; Treas. Trefian, '43; V. Pres. Trefian, '43; Basketball, '40-'44; Trio, '40-'42; Deputation, '43-'44; Volleyball, '40-'44; S. B. Play, '44; Election Board, '44; Chorus, '40-'44; Co-Adv. Mgr. L'Ami, '44.

Ruden, Betty June, B. A.
Bend, Oregon
Major: Social Service
Activities: College of St. Scholastica, '40-'43; Co-Editor L'Ami, '44; Crescent Staff, '44; Member Y. W., '44; Dramatics, '44; S. B. Play, '44.

Thomas, Florence Swanson,
B. A.
Sherwood, Oregon
Major: English
Activities: Class Play, '40; Chr. Christian World Education, '40; Music Chr. Y. W., '41-'42; Sec'y. Trefian, '42; V. Pres. Trefian, '43; Soc. Chr. Trefian, '43; Dramatics Mgr., '42-'43; Sec'y. Y. W., '43; Critic, Trefian, '44; Sec'y. S. B., '43-'44; Pres. Y. W., '43-'44; Listed in Who's Who, '44.

Repp, Kathleen Smith, B. A.
Newberg, Oregon
Major: Bible
Activities: Class Play, '40; Toured Northwest with Women's Trio, summer '41; Chorus, '41-'42; World Christian Education Chr., Y. W., '41-'42; V. Pres. Y. W., '43; Member Trefian, '43; Bus. Mrg. Crescent, '44; Soc. Chr. Y. W., '44; Volleyball, '43; Class Sec'y., '41-'43; Chorus, '41-'43.

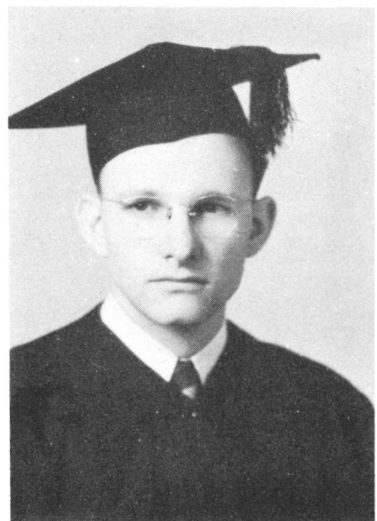
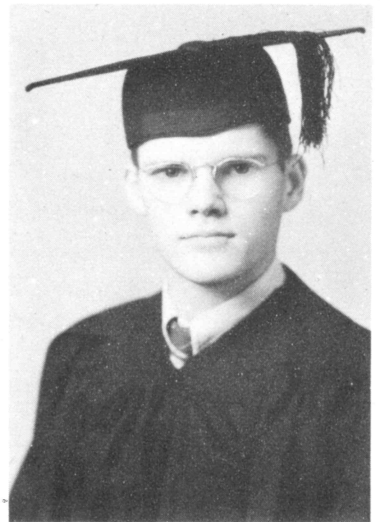
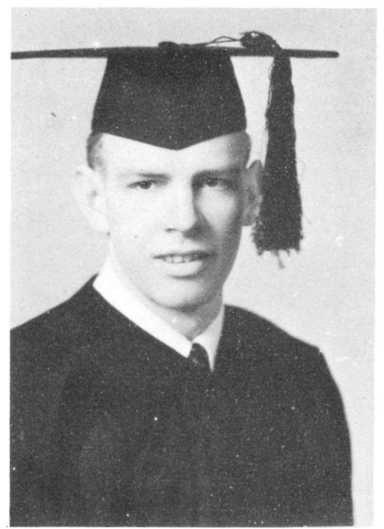
Sieloff, Irene Lewis, B. A.
Newberg, Oregon
Major: Music, Diploma in Piano
Activities: Sec'y. Old Students Assoc., '41-'42; Sec'y. Trefian, '41-'42; Pres. Trefian, '43; Pres. Y. W., '43; Pub. Chr. Y. W., '44; Archery Chr., '42-'43; Trio, '41-'42; Chorus, '40-'44; Member Trefian, '41-'43; Orchestra, '40-'42; Member Y. W., '40-'44; Listed in Who's Who, '43.

Willcuts, Jack, B. A.
Greenleaf, Idaho
Major: Religion
Activities: Friends' Bible College, Haviland, Ks., '39-'40, '41-'42; Deputation Chr. Y. M., '42-'43; Pres. Sr. Class, '43-'44; Pres. M. A. A., '43-'44; Y. M., '43-'44; Listed in Who's Who, '44; Basketball Letterman, '43-'44; Forensics, '44; Cardinal, '44.

Roberts, Arthur, B. A.
Newberg, Oregon
Major: Theology
Activities: College of Idaho, '40-'41; Baseball Varsity, '42-'43; Basketball, B. team, '42; Varsity, '44; S. B. Play, '42; Old Pulpit Extemp. Contest Award, '43; Sec'y-Treas. Y. M., '44; L'Ami Bus. Mgr., '42; Crescent Editor, '42-'43; Chief Treas., '43-'44; Pres. Christian Workers' League, '43; Treas. Gold P., '44; Junior Scholarship, '43; Deputation Work; Listed in Who's Who, '42.

Thomas, David, B. A.
Sherwood, Oregon
Major: Bible
Activities: Fresh. Class Play, '40; S. B. Play, '43; Treas. M. A. A., '41-'43; Sec'y. Y. M., '41-'42; Pres. Y. M., '42-'43; Class Pres., '42-'43; Pres. S. B., '43-'44; Deputation Chr. Y. M., '43-'44; V. Pres. Gold P., '43-'44; Basketball Letterman, '42-'44; Baseball Letterman, '40-'41; Sr. Scholarship, '43; Listed in Who's Who, '44.

Wohlgemuth, Margery, B. S.
Newberg, Oregon
Major: Biology
Activities: Chorus, '40-'42; Member Y. W., '40-'44; S. B. Play, '40; Sec'y. Y. W., '41-'42; Pres. W. A. A., '41-'42; Member Gold Q., '41-'44; Treas. Gold Q., '42-'43; Women's Athletic Coach, '42-'44; Listed in Who's Who, '42.





Queen Betty I, Cardinal Jack Willcuts

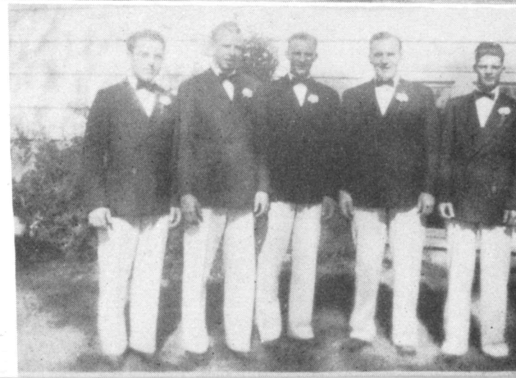
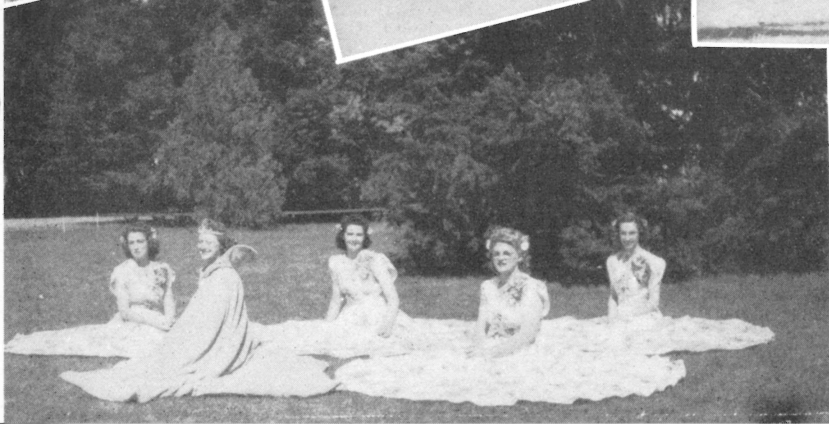
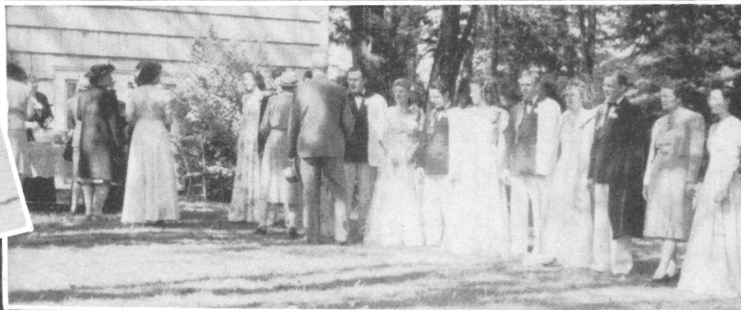
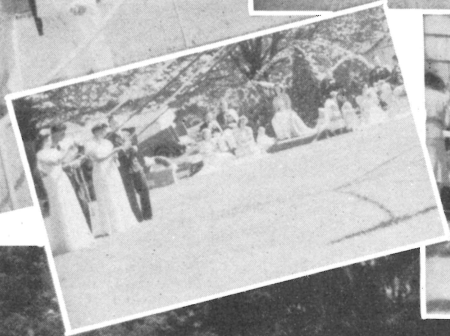
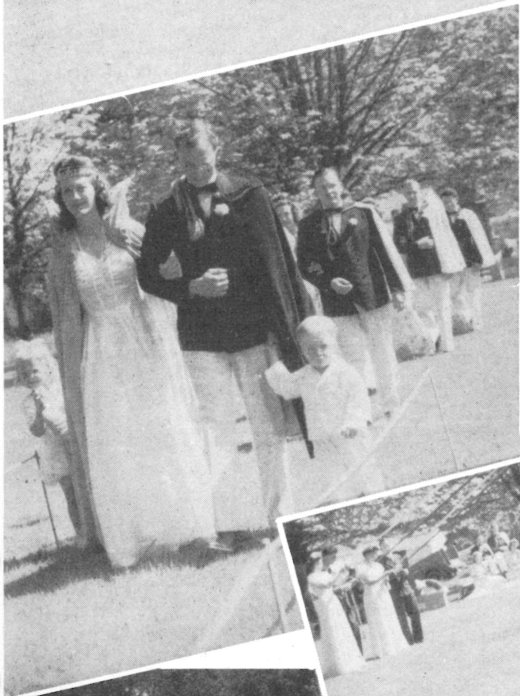
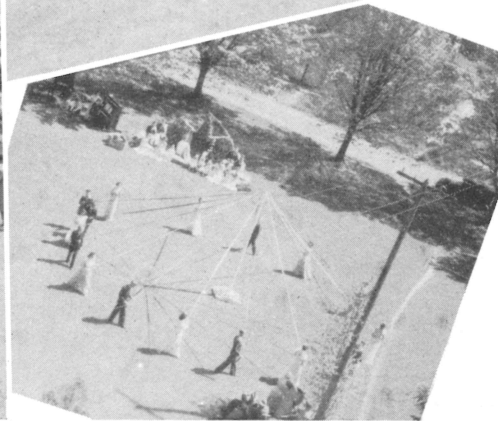
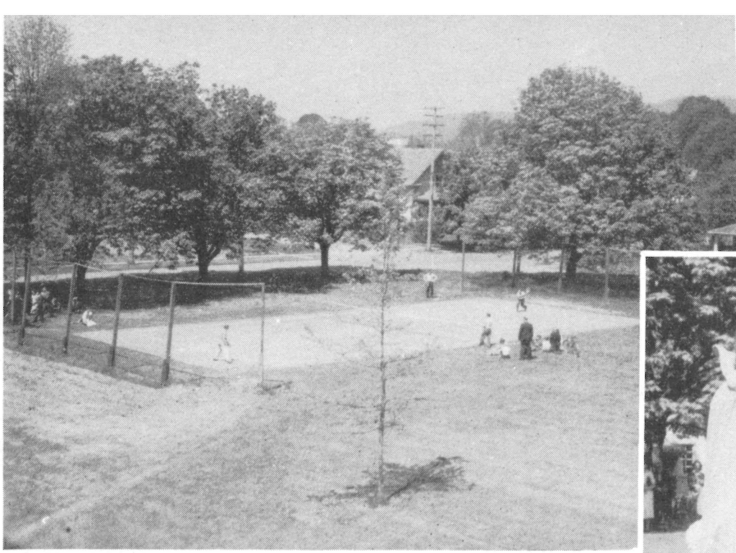
May Day

Queen Betty I was crowned by Cardinal Jack Willcuts in gala May Day ceremonies May 5, thus highlighting the many activities of the day. Joyce Perisho, Irene Sieloff, Florence Thomas, Geraldine Tharrington, Mahlon Macy, Herschel Thornburg, David Thomas, and Arthur Roberts comprised the court.

Generalissomos for the event were Barbara Garrett and Ross Gulley. A program of athletic activities preceded the coronation in the afternoon. A tea and reception given by Trefian Literary Society rounded out the afternoon activities. Gypsy entertainment, one-act plays, and movies of previous May Days were skillfully presented for an enjoyable evening program.

Left to Right: Joyce Perisho, Herschel Thornburg, Geraldine Tharrington, Arthur Roberts, Queen Betty I, Cardinal Jack Willcuts, Irene Sieloff, Mahlon Macy, Florence Thomas, David Thomas.







3rd Row, Left to Right: Gulley, Haworth, Willcuts, Roberts, Thornburg.
 2nd Row: Cole, Garrett, Mardock.
 1st Row: Ruden, Baird, Macy.

Dramatics Club

Early in the second semester a dramatics club was formed, to answer the needs of the students interested in speech and dramatics. A constitution was set up, and Paul Thornburg was elected president of the group. The group undertook as a project the improvement of the stage and chapel.

No name has as yet been selected by the club. Lewis Hoskins is serving as faculty advisor to the group.

Student Body Play

The three-act play, "Marcheta," was given by the Associated Student Body, March 31 and April 1. A play of old Spanish mystery and romance, "Marcheta" was well received by responsive audiences at both performances.

Charlotte Macy, Student Body Dramatics manager, Lewis Hoskins, and Miss Bainter of Newberg High School, coached the play.

Cast Members, Left to Right: Hadlock, Ruden, Willcuts, Roberts, Ogier, Craven, Thornburg, Thomas, Marx, Nordyke, Fowler.



Pacific College

NEWBERG, OREGON

- A Four Year Liberal Arts College
- Pre-professional Training in all fields
- A. B., B. S., and Th. B. Degrees conferred
- Preparation for Community and Social Service

The Only
Quaker College
in the
Pacific Northwest

Thorough Training
in a Wholesome
CHRISTIAN
Environment

ELLIS

Grocery and Market

THE RED AND WHITE STORE

Newberg Lumber Yard

A complete line of

Building Materials

112 South Edwards

Phone 128J



C. A. HODSON & SON

Morticians

Ambulance Service

Phone 118M—Day or Night

Newberg, Oregon

